






USB DRIVER INSTALLATION GUIDE FOR WINDOWS 7

Rev. 1.0

June, 2012

www.tvielectronics.com

 2211 Rayford Rd., Ste. 111-332 • Spring, TX 77386  281-408-4051  281-408-4052

CONTENTS

1. INTRODUCTION	1
2. USB DRIVER INSTALLATION	1

FIGURES

<i>Figure 2-1</i>	1
<i>Figure 2-2</i>	1
<i>Figure 2-3</i>	2
<i>Figure 2-4</i>	2
<i>Figure 2-5</i>	3
<i>Figure 2-6</i>	3
<i>Figure 2-7</i>	4

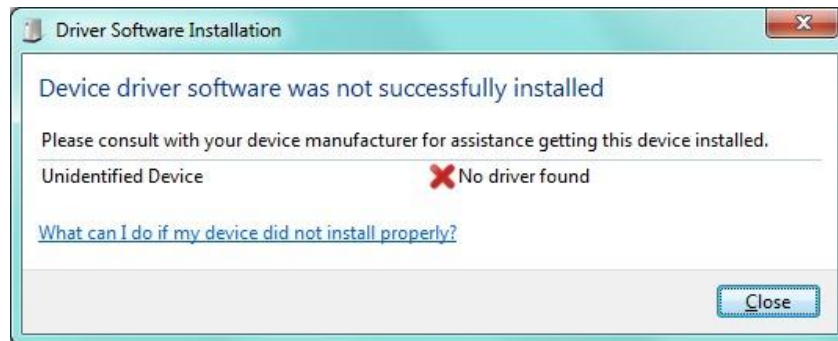
1. INTRODUCTION

This guide describes how to install USB Communications Device Class (CDC) driver for Microsoft Windows 7 operating system.

2. USB DRIVER INSTALLATION

- Connect LCD controller to a spare USB port on your PC. If there is an available Internet connection, Windows 7 will silently connect to the Windows Update website and install any suitable driver it finds for the device. If the automatic installation takes place, there is no need to continue with the procedure outlined below. If no suitable driver is automatically found, the Windows “No driver found” message (Figure 2-1) will appear and then the following procedure should be followed.

Figure 2-1



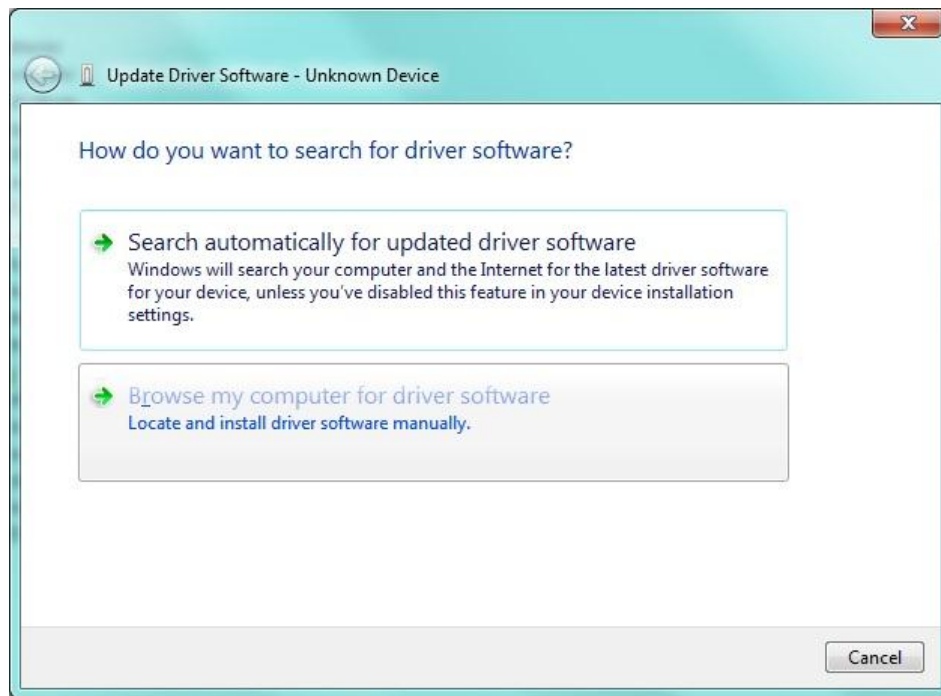
- Press the Windows start button to bring up the start menu and select “Control Panel”. From the Control Panel window select Hardware and Sound. At the next screen select Device Manager. In the Device Manager window there will be an Unknown Device under Other Devices with a yellow warning symbol to indicate a problem i.e. no driver installed.

Figure 2-2



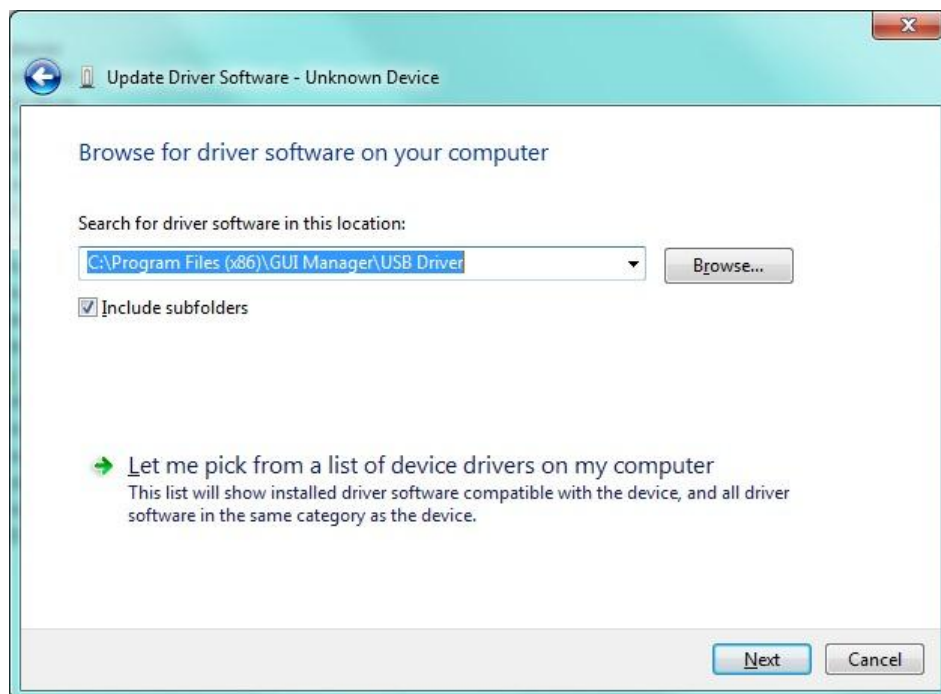
- Right click on the Unknown Device and select “Update Driver Software...” from the displayed menu. This then displays the option for an automatic search or a manual search.

Figure 2-3



- Select the second option to browse manually.

Figure 2-4



- In the address box put the exact location where the drivers have been saved to. This may be on a CD or in a folder on the PC. It is not necessarily the exact same location as shown on Figure 2-4. The drivers could have been saved anywhere of the users choosing. The USB Driver is located in the installation folder "GUI Manager\USB Driver\".

After entering the driver location path, select "NEXT" to start the installation. The pop up window, such as shown below will be displayed i.e. the driver is not certified.

Figure 2-5



If you are certain of the source of the driver, the warning can be ignored and you can continue installation by selecting "Install this driver software anyway". If you are unsure about the driver source, contact your vendor.

- When the installation is finished, a completion screen is displayed.

Figure 2-6



Note: this screen also displays the COM port assigned to the device.

- Press Close to close this window and go back to the Device Manager Window. This time the Device Manager does not have an Unknown Device entry under Other Devices, but does show entry under Ports (COM & LPT). The screenshot below displays a correct installation. The device is now ready to use on COMx.

Figure 2-7

