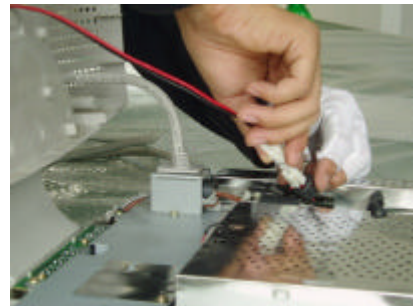
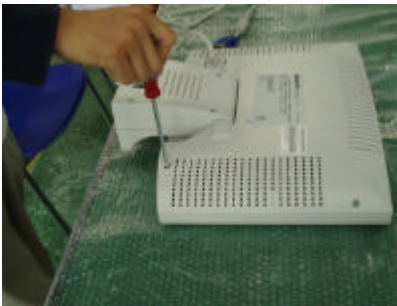


## CONTOUCH Hardware Installation Guide

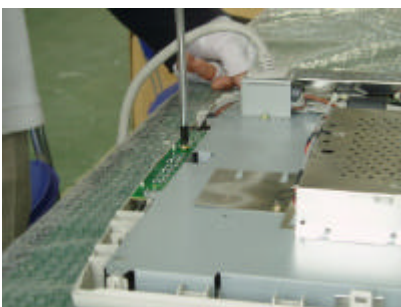
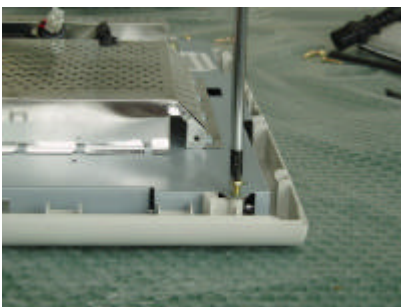
1. Set the monitor on the working desk, back cover upturned;  
Prepare the tools illustrated in the following picture.



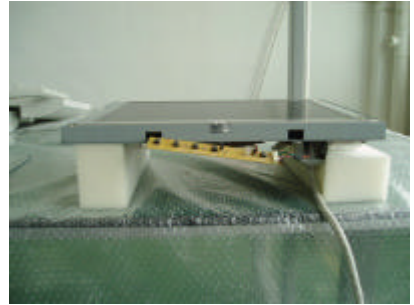
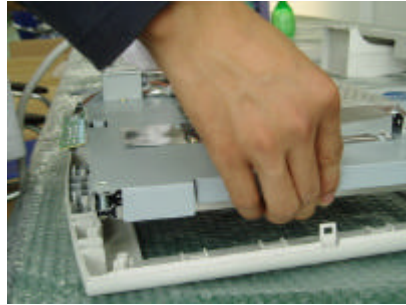
2. Loosen the screws on the back of the monitor;  
Take off the back cover of the monitor;  
Unplug the power cable inside the monitor.



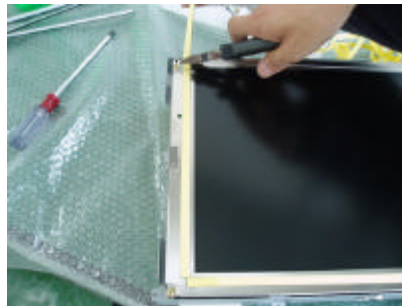
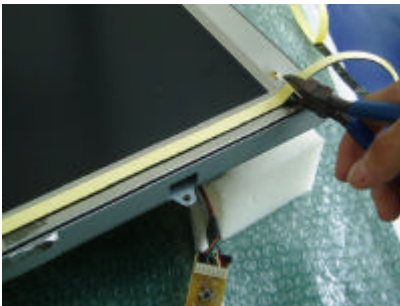
3. Loosen the screws inside the monitor.



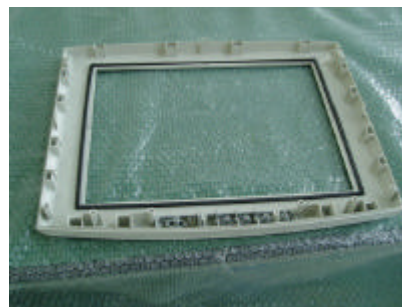
4. Take off the LCD module ;  
Set the LCD module at a safe place illustrated as following picture.



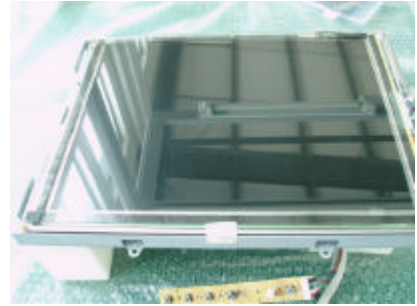
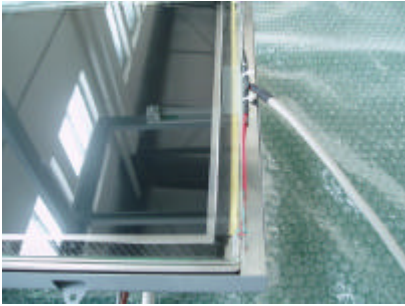
5. Attach the double-side adhesive tapes onto the four sides of the LCD Module.



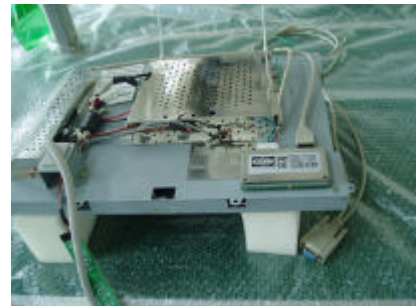
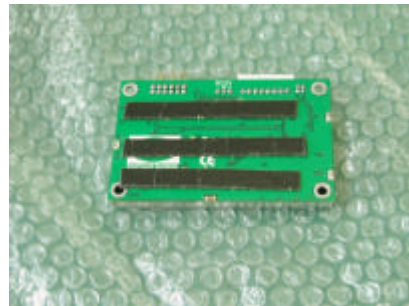
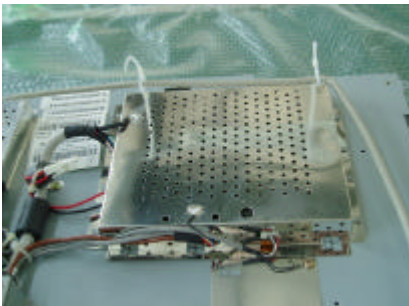
6. Attach the mounting tapes on the bezels of the monitor;  
Try to attach the tapes as near as possible to the inner edge.



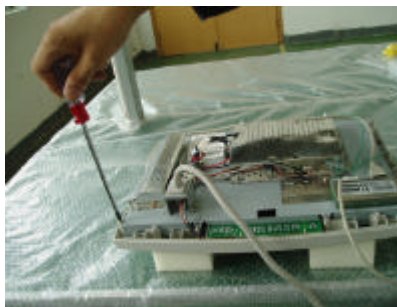
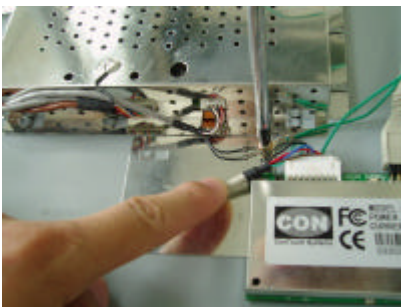
7. Attach the touch panel to the front side of the monitor;  
Press the touch panel to be attached firmly.



8. Assemble the LCM with touch panel to the front bezel;  
Neaten the cable of the touch panel.  
Attach the double-side adhesive tape to the controller;  
Attach the controller to a free space inside the monitor.



9. Ground the touch panel properly;  
Tighten the screws of the LCD Module;  
Cut a hole to make an outlet for the cable of the touch panel.



10. Tighten the screws on the back cover of the monitor, and the installation is finished.

